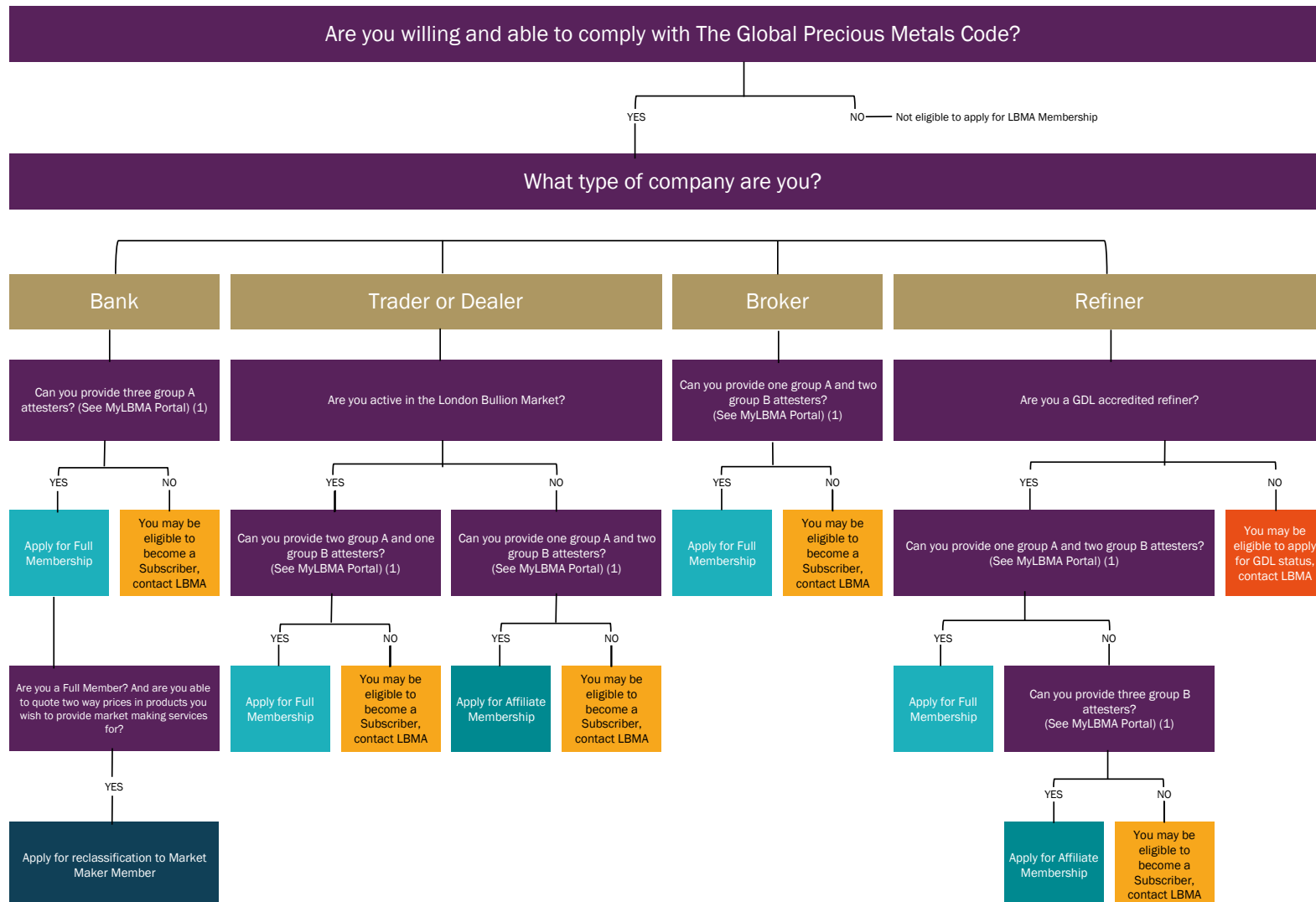


Schedule 2a: Membership Application Toolkit

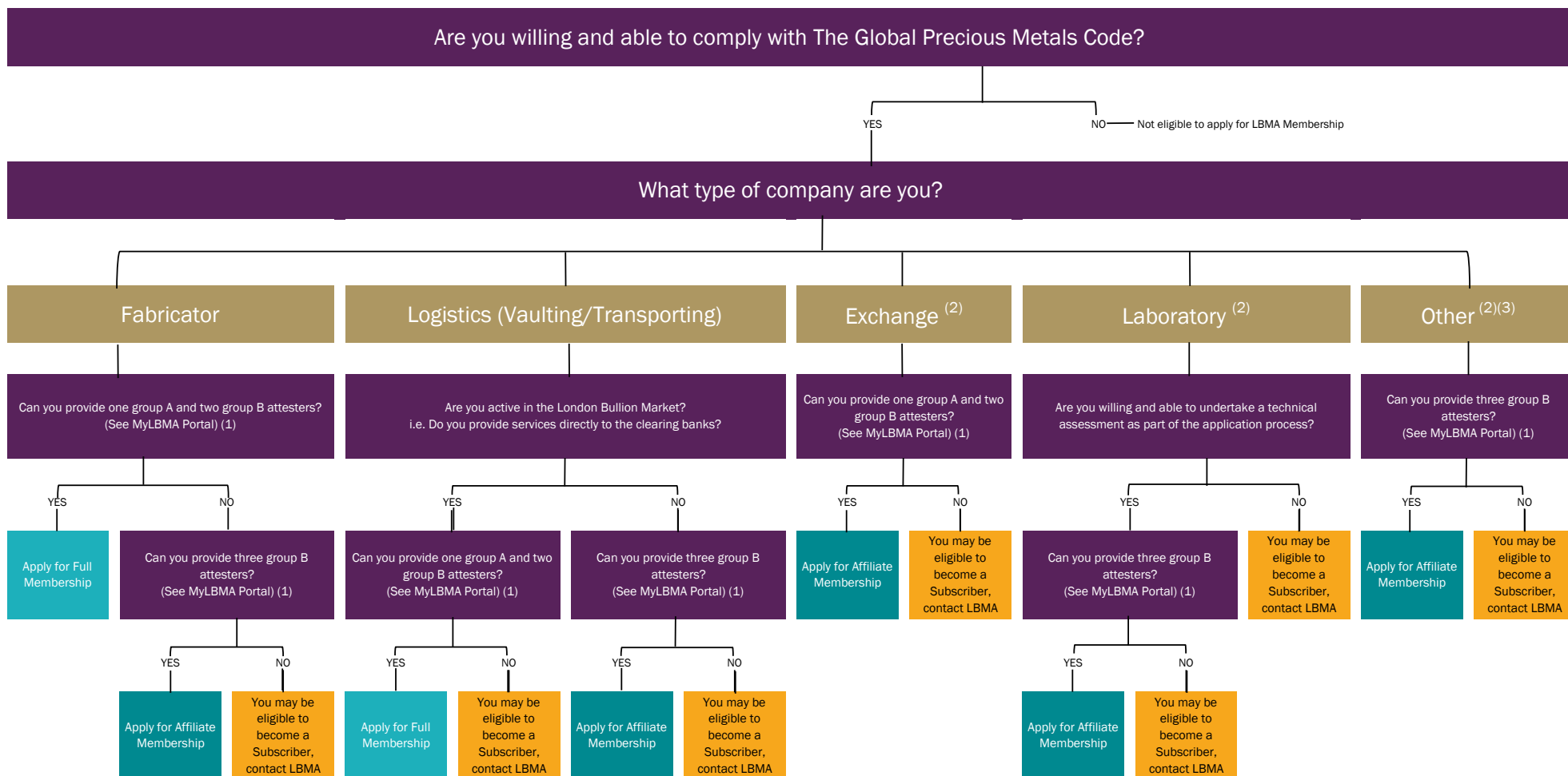
Please see schedule 2b for the following company types: Fabricator, Logistics (Vaulting/Transport), Exchange, Laboratory, Other



(1) The provision of attesters is subject to review by the Membership Committee. The level of attestation shown in the flowchart is the recommended level for the relevant application. Attesters required by companies are reviewed periodically and may be subject to change as a result of these reviews.

Schedule 2b: Membership Application Toolkit

Please see schedule 2a for the following company types: Bank, Trader, Dealer, Refiner, Broker



(1) The provision of attesters is subject to review by the Membership Committee. The level of attestation shown in the flowchart is the recommended level for the relevant application. Attesters required by companies are reviewed periodically and may be subject to change as a result of these reviews.

(2) Your business activities must be relevant to the Global Precious Metals Market.

(3) Central Banks may become subscribers